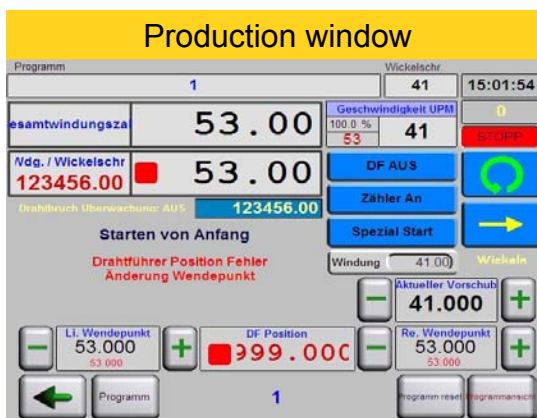
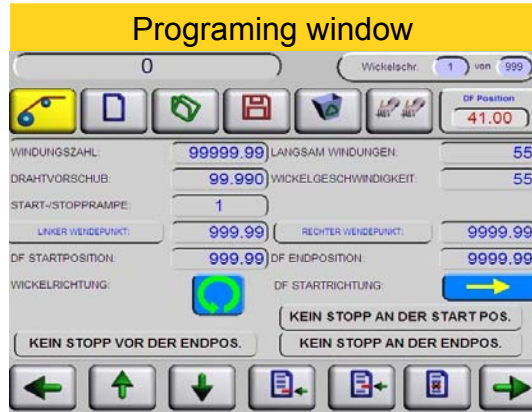


Controller - Linear Winding Machines



The controller of the Linear Winder is a sturdy industrial CN-Control, with a RUFF developed Software.

The winding programs will be created in winding steps. The controller can handle csv-files, so for example, very long programs can be written in Excel and load it in the machine.

A network connection of the machine to a computer is also possible, for send and up load of winding programs.

All RUFF Linear Winders have the same controller, this has the advantage: one operator can handle all machine sizes from small bench top model up to heavy duty floor winder. Further the machine has 5 free programmable out-/ inputs for external devices if needed for your application, these can be activated or deactivated in each sequence.

TECHNICAL DATA:

Memory	Flash memory
Display	Touch screen
Display size.....	10,4"
PC Interface	ESA-Net
Connection.....	RS232
Prog. loading via.....	USB
SW-Updates.....	via USB
Software languages.....	All
Operating system.....	Linux
Controller technology.....	CN Controller