

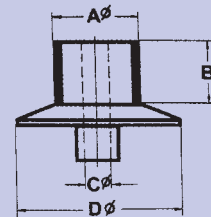
GEAR RACK TAPING HEADS FOR THE FLOOR MODELS

These taping heads work with a gear rack system similar to the gear rack winding heads but vary in one major way. That is as the tape is loaded on the tape magazine it is also taped on to the core. A flat leather belt round the outside of the tape magazine controls the taping tension and is infinitely variable. The tape is automatically cut when the correct length of tape is loaded as is the complete operation. Customised components for special applications can be supplied upon request.



TAPING HEAD DATA	RW 33/B		RW 44/B		RW 45/B		RW 45-B-380	
	mm	inch	mm	inch	mm	inch	mm	inch
- TAPE WIDTHS	9 - 20	0,354 - 0,787	9 - 25	0,354 - 0,984	9 - 25	0,354 - 0,984	2 - 25	0,354 - 0,984
- BUILD UP FACTOR	+ 20	+ 0,787	+ 25	+ 0,984	+ 25	+ 0,984	+ 25	+ 0,984
- MAGAZINE DIAMETER	220	8,66	340	13,39	490	19,29	490	12,29
- FINISHED CORE OD	65 - 350	2,55 - 14	90 - 500	3,54 - 20	90 - 1000	3,54 - 39	90 - 1000	3,54 - 39
- FINISHED CORE ID WITH SMALLEST TAPE	29	1,44	34	1,34	34	1,34	34	1,34
- FINISHED CORE HEIGHT	100	3,94	150	5,9	250	9,842	380	14,96
- MAX. TAPING SPEED RPM	140		140		120		120	
- COMPATIBLE ROLLER TABLES	RW 333, RW 333-V-So		RW 333, RW 333-V		RW 333-V, RW 333-VS1 RW 333-VS2		RW 333-V, RW 333-VS1, RW 333-VS2, RW 333-VSO	
- COMPATIBLE M/C	RWB, RWC, All RWS machine series		RWB, RWC, All RWS machine series		RWB, RWC, All RWS machine series		RWB, RWC, All RWS machine series	

STANDARD CORE TRANSPORT ROLLERS FOR ROLLER TABLES FOR FLOOR MACHINES



Roller table type	A \varnothing mm	B \varnothing mm	C \varnothing mm	D \varnothing mm
RW 333	75	40	22	100
RW 333	90	40	22	100
RW 333	120	50	22	160
RW 333	140	50	22	160
RW 333-V	120	50	30	160
RW 333-V	140	50	30	160
RW 333-V	120	50	30	200
RW 333-V	140	50	30	200

TAPERED CORE TRANSPORT ROLLERS FOR ROLLER TABLES FOR FLOOR MACHINES

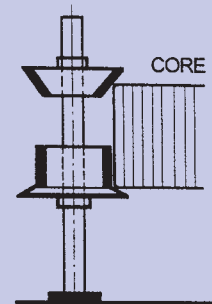
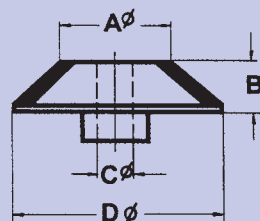
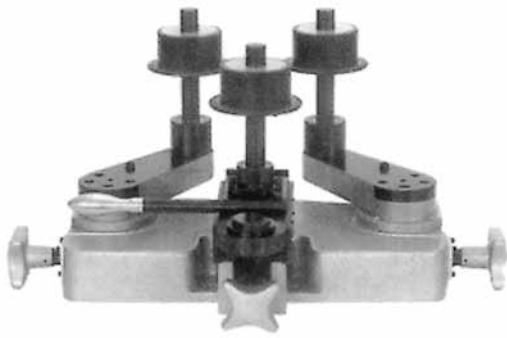


Table type	A \varnothing mm	B \varnothing mm	C \varnothing mm	D \varnothing mm
RW 333-V	55	25	30	105

ROLLER TABLES FOR THE FLOOR MODELS

COMPATIBLE MACHINE BASE: RWB, RWC, ALL RWS MACHINE SERIES.



ROLLER TABLE RW 333



ROLLER TABLE RW 333-V



ROLLER TABLE RW 333-VS1

COMPATIBLE MACHINE BASE: RWB, RWC, ALL RWS MACHINE SERIES.



ROLLER TABLE RW 333-VS2



ROLLER TABLE RW 444



ROLLER TABLE RW 333-V-13

COMBINATION POSSIBILITIES BETWEEN ROLLER TABLES AND WINDING HEADS

Finished core OD range	Head	RW 33	RW 33/B	RW 44	RW 44/B	RW 44-V	RW 45	RW 45-V	RW 45-380	RW 45-EH
RW 333 with rubber rollers ø 75	inch	3,15-14,0	3,15-14,0	4,35-14,0	4,35-14,0	4,92-14,0	-	-	-	-
	mm	80-350	80-350	110-350	110-350	125-350	-	-	-	-
RW 333 with rubber rollers ø 90	inch	2,55-14,0	2,55-14,0	4,0-13,0	4,0-13,0	4,53-13,0	-	-	-	-
	mm	65-350	65-350	100-330	100-330	100-330	-	-	-	-
RW 333 with rubber rollers ø 120	inch	-	-	3,54-11,8	3,54-11,8	4,0-11,8	-	-	-	-
	mm	-	-	90-300	90-300	100-300	-	-	-	-
RW 333-V with rubber rollers ø 75	inch	4,0-14,0	4,0-14,0	5,12-14,0	5,12-14,0	-	5,12-14,0	5,12-14,0	5,12-14,0	5,12-14,0
	mm	100-350	100-350	130-350	130-350	-	130-350	130-350	130-350	130-350
RW 333-V with rubber rollers ø 90	inch	3,35-13,0	3,35-13,0	4,72-13,0	4,72-13,0	5,51-14,0	4,72-13,0	4,72-13,0	4,72-13,0	4,72-13,0
	mm	85-330	85-330	120-330	120-330	140-330	120-330	120-330	120-330	120-330
RW 333-V with rubber rollers ø 120	inch	-	-	-	-	4,92-14,0	-	-	-	-
	mm	-	-	-	-	125-350	-	-	-	-
RW 333-V-S0 with rubber rollers ø 90	inch	-	-	-	-	-	-	-	-	4,0-19,7
	mm	-	-	-	-	-	-	-	-	100-500
RW 333-V-S1 (with swivel arms)	inch	-	-	4,33-19,7	4,33-19,7	4,33-19,7	4,33-19,7	4,33-19,7	4,33-19,7	-
	mm	-	-	110-500	110-500	110-500	110-500	110-500	110-500	-
RW 333-V-S2 (with swivel arms)	inch	-	-	-	-	-	9,84-39,37	9,84-39,37	9,84-39,37	9,84-39,37
	mm	-	-	-	-	-	250-1000	250-1000	250-1000	250-1000
RW333-VS-13 (with extra horizontal rollers for heavy cores)	inch	-	-	4,0-19,7	4,0-19,7	4,0-19,7	4,0-19,7	4,0-19,7	4,0-19,7	4,0-19,7
	mm	-	-	100-500	100-500	100-500	100-500	100-500	100-500	100-500
RW444 (with swivel arms)	inch	-	-	-	-	-	3,94-32	3,94-32	4,0-19,7	4,72-32
	mm	-	-	-	-	-	100-800	100-800	100-800	120-800